

PROGRESS SAVVION[™] BUSINESS PROCESS MODELER[™]

PROGRESS[®] SAVVION[™] PROCESS MODELER: OVERVIEW

A key component of the Progress[®] Savvion[™] BusinessManager[™] platform, Progress[®] Savvion[™] Process Modeler puts a high-quality business process designer at the fingertips of business people. For the first time, everyone in your business can participate in documenting business processes and improvement ideas.

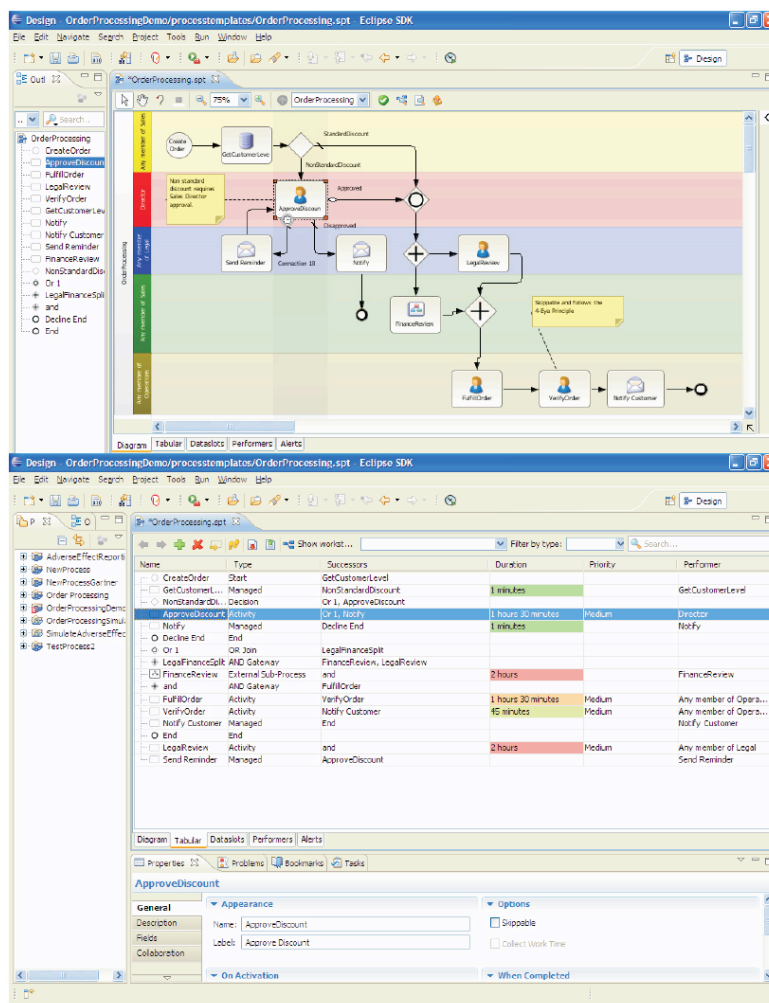
Because models created in Savvion Process Modeler seamlessly and transparently interchange with the Progress[®] Savvion[™] BPM Studio development environment, you can support collaborative design between business analysts and IT technologists. The models created by business users serve as the specification for the working application, eliminating any requirements getting “lost in translation” between business and IT. The resulting process designs can be tested and simulated by the analyst prior to deployment, for even greater control.

Since Savvion Process Modeler is a standalone PC application and can easily be taken on a laptop to business planning meetings with the process owners, a real convenience that saves time and money. Afterwards, the process models can be saved in the Process Asset Manager repository for further development and sharing. Savvion Process Modeler enables you to:

KEY FEATURES

Savvion Process Modeler is an easy-to-use business application to help people articulate, simulate and document business processes. It's the best way for business people to communicate how current business processes work today and the only application that enables business people to test their improvement ideas without burdening IT specialists. Savvion Process Modeler brings more business people to the table in your BPM initiatives.

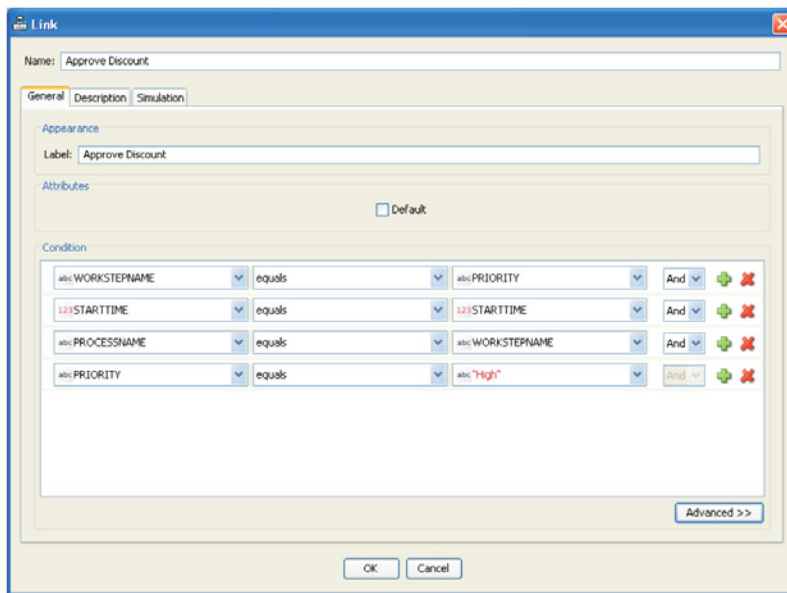
- > Model and simulate process designs before implementing them in a production environment, reducing costly and time-consuming test cycles
- > Automatically document processes to maintain and support compliance with new industry and government regulations
- > Store processes in a central repository for reliable access to best practices and reuse of common process elements, saving time and eliminating duplicate efforts
- > Continually optimize business-critical processes to incrementally improve operational efficiency
- > A built-in expression builder provides people with an easy way to describe their decision flow logic. This logic can be extended with scripting by technical experts if more complex logic is required.



PROCESS MODELING

The Savvion Process Modeler patent-pending Tabular View process definition provides a unique and easy-to-use way for business users to define their process. Process diagrams are automatically generated from the tabular view. Savvion Process Modeler also provides a graphical desktop design environment that is intuitive and simple to learn. Not only can you create a visual representation of your process, but you can also generate process-flow diagrams that contain instructions for handling exceptions, sub-processes, and events.

For business people who are interested in sharing their high-level ideas, Savvion Process Modeler supports the concept of abstract models. These non-executable models make it easier for high-level business people to communicate their ideas to people responsible for functional details of company strategies.



A built-in Expression Builder provides people with an easy way to describe their decision flow logic

Savvion Process Modeler also supports a new usage scenario, project-oriented processes, which brings together the value of project portfolio management and BPM. It allows you to define phases and milestones and perform path and timeline analysis. Additionally, you can easily import your projects from MS Project and convert them into process models.

Savvion models are based upon the industry-standard notation for representing process flow diagrams: Business Process Modeling Notation (BPMN). Throughout the modeling phase, Savvion Process Modeler will keep

track of the state and logic of your process and can verify that rules and parameters are being obeyed, so you can be assured you are building logical, executable process flows.

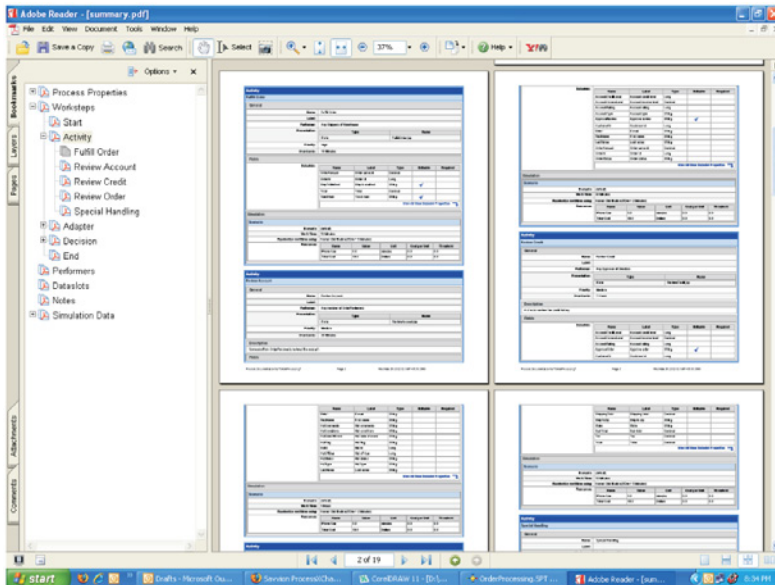
PROCESS SIMULATION

The simulation environment in Savvion Process Modeler enables business users to test process improvement ideas before committing to a full production deployment of a new solution. The robust simulation capabilities allow objective-based simulation, multiple process and multi-scenario simulation and comparison. The simulation allows you to take into account human and system performers, consumable and nonconsumable resources and business calendars for more comprehensive analysis.

An extensive collection of reports graphically depicts resource usage, highlighting process bottlenecks and unanticipated resource usage.

DOCUMENTED COMPLIANCE

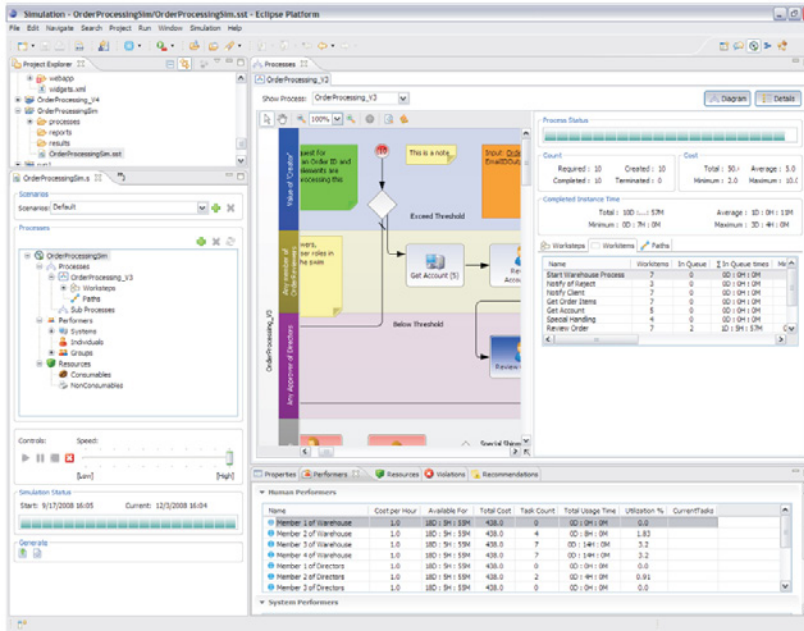
During modeling and simulation, Progress Savvion BusinessManager software creates auditable documentation of your process, including a detailed description of the process design. Your business may need to review and update its processes in response to government legislation such as Sarbanes Oxley or Health Insurance Portability and Accountability Act (HIPAA).



Complying with these or other regulations may require your organization to significantly revamp existing processes or put new measures into place. Keeping detailed records of the process evolution helps streamline deployment of compliant IT systems and minimize disruptions.

OPTIMIZATION

As business conditions change, so will your business processes. Savvion Process Modeler was designed to facilitate rapid idea generation and clean communication between business people and those more technically inclined. It is a fully integrated part of the Savvion BusinessManager suite and, as such, shares the data model and interoperability with the other core components of the system.



SAVVION BUSINESSMANAGER

Savvion Process Modeler is part of Savvion BusinessManager, the first BPM system in the industry to deliver true process lifecycle management, the complete end-to-end delivery of business processes from modeling to deployment to management to process improvement. Unique in the industry, Savvion's enhanced BPM system puts role-specific tools directly into the hands of those closest to the process at the appropriate phase. These include a robust

modeling and simulation system for business analysts; a collaborative process design, business rule and event management and integration system for IT developers; and business performance scorecard, business intelligence analytics and process improvement tools for business managers.

This tight integration of all phases of the process lifecycle, coupled with Savvion and partner-developed industry process templates, enable Savvion customers to quickly move from process discovery to production in less than 90 days while returning 200%-to-300% ROI.

SAVVION PROCESS MODELER TECHNICAL MATRIX

OPERATING SYSTEMS

- > Windows 2000/Vista/XP Professional SP2

JAVA STANDARD:

- > JDK 1.5/1.6
- > J2EE 1.3/1.4

KEY FEATURE	BENEFIT
Visual modeling environment	Business users easily create information-rich process flow diagrams containing rule, event and exception data. BPMN model notation as well as abstract model support close the gap between high-level thinking and functional process diagrams.
Simulation capabilities	Users can review and test process designs prior to implementation, lowering risk and testing resource usage.
Process documentation	A detailed description of each process can be used to document and support regulatory compliance.
"Business people friendly" user interface	Graphical, easy-to-learn approach lowers the technical skillset requirements, making it easy for all non-technical business people to learn and become proficient.
Full integration with Progress® Savvion™ Process Asset Manager	Users of the Savvion Process Asset Manager will have access to reusable libraries of components including prebuilt models, best practices information models, and reusable process diagrams.
Full application review	Users of the Savvion BusinessManager platform can fully preview running applications in their Modeler experiences, making notations and suggestions as to how to improve user interfaces.

PROGRESS SOFTWARE

Progress Software Corporation (NASDAQ: PRGS) is a global software company that enables enterprises to be operationally responsive to changing conditions and customer interactions as they occur. Our goal is to enable our customers to capitalize on new opportunities, drive greater efficiencies, and reduce risk. Progress offers a comprehensive portfolio of best-in-class infrastructure software spanning event-driven visibility and real-time response, open integration, data access and integration, and application development and management—all supporting on-premises and SaaS/cloud deployments. Progress maximizes the benefits of operational responsiveness while minimizing IT complexity and total cost of ownership.

WORLDWIDE HEADQUARTERS

Progress Software Corporation, 14 Oak Park, Bedford, MA 01730 USA

Tel: +1 781 280-4000 Fax: +1 781 280-4095 On the Web at: www.progress.com/datadirect

For regional international office locations and contact information, please refer to the Web page below:

www.progress.com/worldwide

Progress, Savvion, Savvion BusinessManager, and Business Making Progress are trademarks or registered trademarks of Progress Software Corporation or one of its affiliates or subsidiaries in the U.S. and other countries. Any other trademarks contained herein are the property of their respective owners. Specifications subject to change without notice.

© 2009-2010 Progress Software Corporation and/or its subsidiaries or affiliates. All rights reserved.

Rev. 04/10 | 6525-129636

